

MontaLift
makes lifting easier

Montalift M21-4WDS

Potain IGO MA21 Self-Erecting Tower Crane Mounted on 4WD/4WS Self-Propelled Montalift Carrier



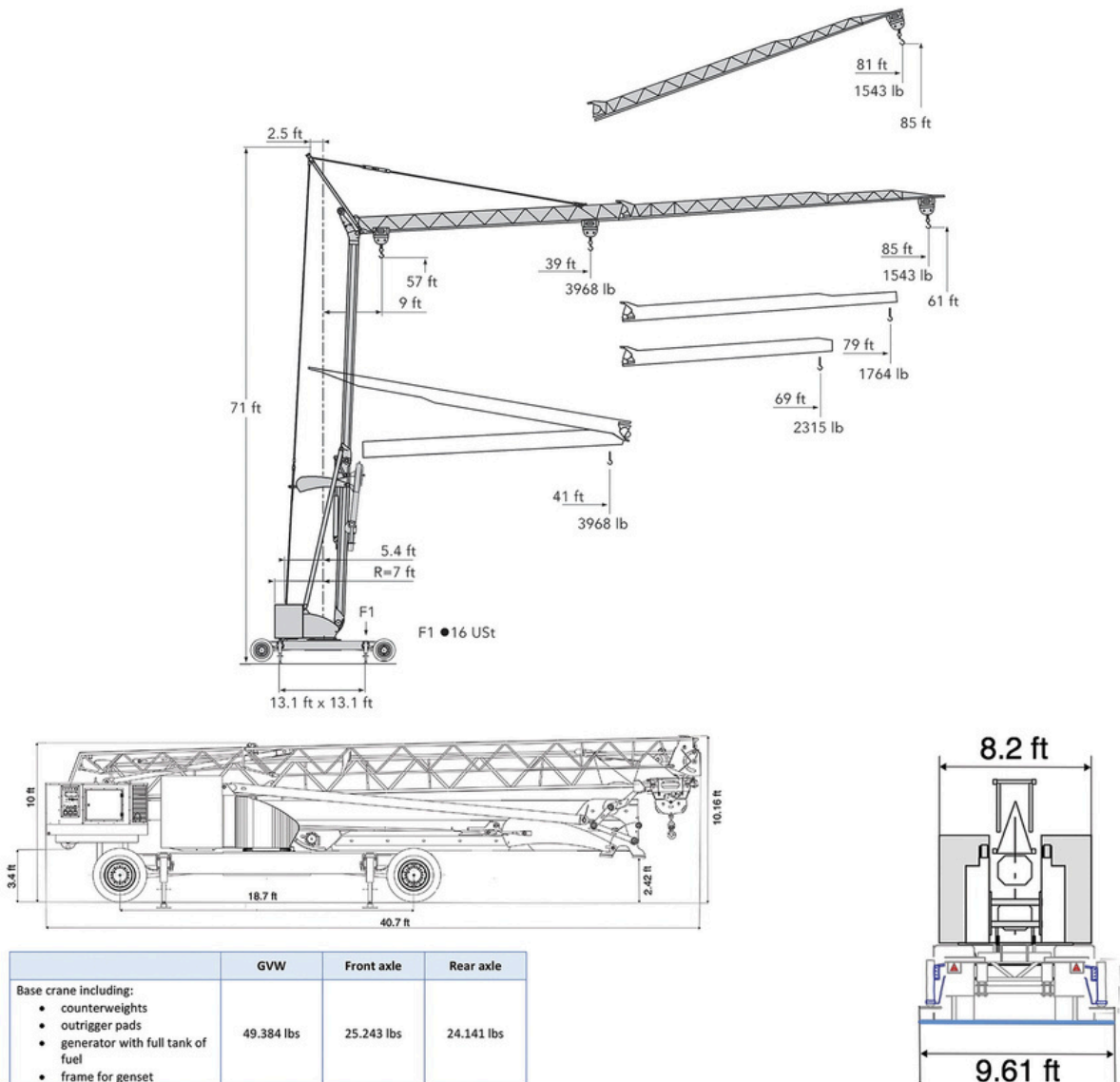
Specifications

- 85 ft. Maximum Radius
- 61 ft. Maximum Under Hook Height (Jib Horizontal)
- 85 ft. Maximum Under Hook Height (Jib Offset)
- 3,968 lb. Maximum Capacity
- Erected within 10 minutes
- Crane Fully Radio Remote Operated
- 4 Outriggers with 13' 1" x 13' 1" Base
- Electro-mechanical 4WD/ 4WS
- 2 Speed Transmission
- Can be Driven Fully Erected
- Carrier Uses Tethered Controls

Loadchart

Radius (ft)	39	43	46	49	52	56	59	62	66	69	72	75	79	82	85
Capacity (lb)	3968	3594	3285	3020	2789	2590	2414	2260	2127	2006	1896	1797	1709	1620	1543

NOTE: Dimensions and weights may vary due to manufacturing tolerances.



THIS CHART IS ONLY A GUIDE AND SHOULD NOT BE USED TO OPERATE THE CRANE.

The individual crane's load chart, operating instructions and other instructional plates must be read and understood prior to operating the crane

TOWER CRANE RENTAL LLC

ARKANSAS - COLORADO - KANSAS - MISSOURI - OKLAHOMA - TEXAS

(620) 295-1847 | TowerCraneRentalLLC.com