

# TOWER CRANE RENTAL LLC

ARKANSAS - COLORADO - KANSAS - MISSOURI - OKLAHOMA - TEXAS

(620) 295-1847 | TowerCraneRentalLLC.com

**MontaLift**  
makes lifting easier

## Montalift M32-4WDS

### Potain IGO32 Self-Erecting Tower Crane Mounted on Montalift 4WDS Self-Propelled Carrier.



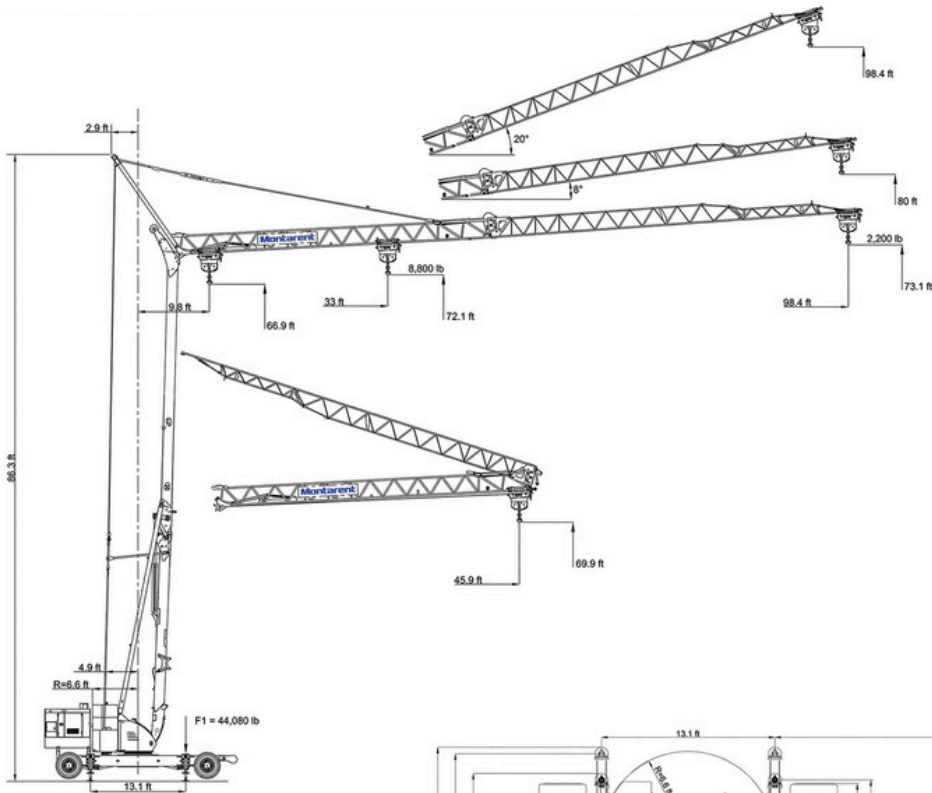
#### SPECIFICATIONS

- Fast & Easy Set-up
- 8,816lb. Capacity at 33.1' Radius
- 2,204lb. Capacity at 98.4' Radius
- 93.2' Height Under Hook
- Radio Remote Operated with Tethered Backup (Crane)
- Driving and Steering via Tethered Control Unit with Push Buttons
- Electro-Mechanical Four-Wheel Drive with 2 Speeds and Four-Wheel Steer
- Can Be Driven Fully Erect (on flat, with no load)
- Heavy Duty Axles with Planetary Hub Reduction & Dual 10.00 x 20 Tires with Terrain Profile
- Four Extendable Hydraulic Outriggers with a Base of 13.1' x 13.1'
- Power Supply: Onboard Airman Genset, or Use "City Power"
- Transport Dimensions: (LxWxH) 44.6'x9.8'x12.8', Total Weight Approx. 79,366lbs.

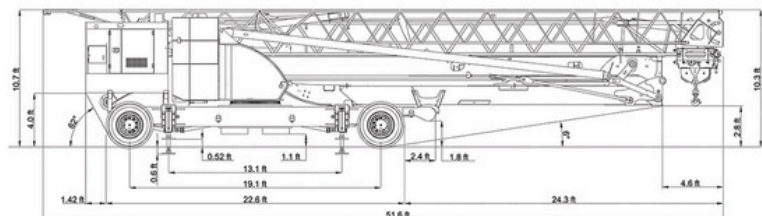
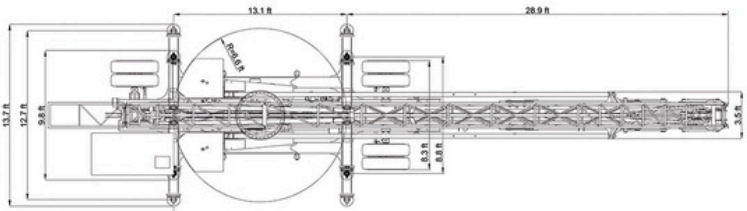
#### LOADCHART

Radius (ft)	33.1	36.0	39.3	45.9	52.4	57.0	60.0	62.3	68.8	75.4	85.3	91.8	98.4
Capacity(lb) 4 fall	8816	7936	7087	5820	4916	4409	4155	3957	3494	3108	2656	2414	2204
Capacity(lb) 2 fall	4409	4409	4409	4409	4409	4409	4155	3957	3494	3108	2656	2414	2204

NOTE: Dimensions and weights may vary due to manufacturing tolerances.



<b>M32 4WDS Mobile Tower Crane</b>	G.V.W. weight (lb)	Front Axel (lb)	Rear Axel (lb)
Including Ballast & 4x Outtrigger Float	77,603	36,156	41,447
with Generator, Supports, 39.6 gal. fuel	81,130	40,124	41,006



THIS CHART IS ONLY A GUIDE AND SHOULD NOT BE USED TO OPERATE THE CRANE.

The individual crane's load chart, operating instructions and other instructional plates must be read and understood prior to operating the crane

# TOWER CRANE RENTAL LLC

ARKANSAS - COLORADO - KANSAS - MISSOURI - OKLAHOMA - TEXAS

(620) 295-1847 | [TowerCraneRentalLLC.com](http://TowerCraneRentalLLC.com)